

Births Where the Mother Received Less Than Adequate Prenatal Care by Rural Verses Urban Residence

This is one of a series of mini-studies comparing Rural versus Urban experiences on selected health-related subjects. To view other subjects, visit the Alabama Rural Health Association web site at www.arhaonline.org and select “Rural/Urban Comparisons.”

Produced Jointly by

The Alabama Rural Health Association

And

The Office of Primary Care and Rural Health Development,
Alabama Department of Public Health

June 30, 2005

Births Where the Mother Received Less Than Adequate Prenatal Care - 2004

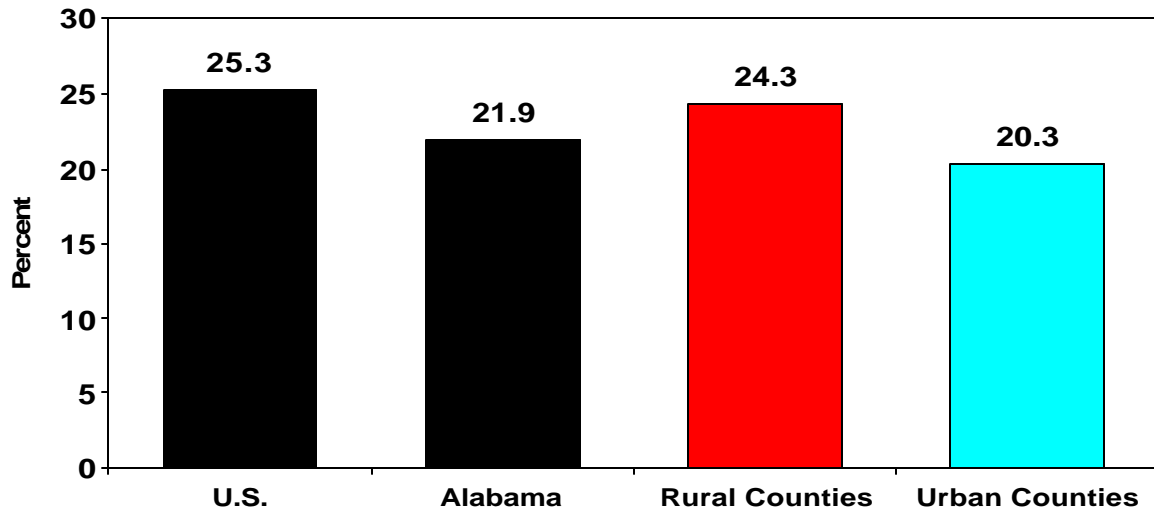
- The percentage of 2004 births for which the mother received less than adequate prenatal care during her pregnancy is lower in Alabama (21.9 %), including rural Alabama (24.3 %), than was seen nationally (25.3 %).
- Less than adequate prenatal care was received by the mother in approximately one in every four births (24.3 %) to rural Alabama residents. This was approximately one in every five births (20.3 %) for urban residents.
- The 22 counties with the highest percentages of births for which less than adequate prenatal care was received were all rural.
- The lack of adequate prenatal care was greatest in the rural counties of South Alabama (27.9 %) , especially in those counties comprising the Delta (33.5 %) and Black Belt (33.2 %) regions.
- 8 of the 10 counties with the highest percentages of births with less than adequate prenatal care (Greene, Barbour, Hale, Russell, Bullock, Perry, Wilcox, and Dallas) are in Alabama's 20-county Delta Region.
- 6 of the 10 counties with the highest percentages of births with less than adequate prenatal care (Greene, Hale, Bullock, Perry, Wilcox, and Dallas) are in Alabama's 12-county Black Belt Region.
- Only one county (Greene) had more than one half of all births involving women who had received less than adequate prenatal care. 62.1 percent of all Greene County resident births involved women who received less than adequate prenatal care during their pregnancies.

Alabama Resident Births and Percent Births Where the Mother Received Less Than Adequate Prenatal Care Selected Areas, 2004

Area	All Resident Births	Births With Less Than Adequate Prenatal Care	Percent
United States (2002)	4,021,726	1,017,497	25.3
Alabama	59,166	12,897	21.9
Urban Alabama Counties	34,384	6,929	20.3
Rural Alabama Counties	24,782	5,968	24.3
Highly Rural Counties	14,429	3,870	27.1
Moderately Rural Counties	10,353	2,098	20.4
Rural North Alabama	14,821	3,212	21.9
Rural South Alabama	9,961	2,756	27.9
Appalachian Region Counties	37,563	7,557	20.3
Delta Region Counties	5,378	1,787	33.5
Black Belt Counties	2,803	923	33.2

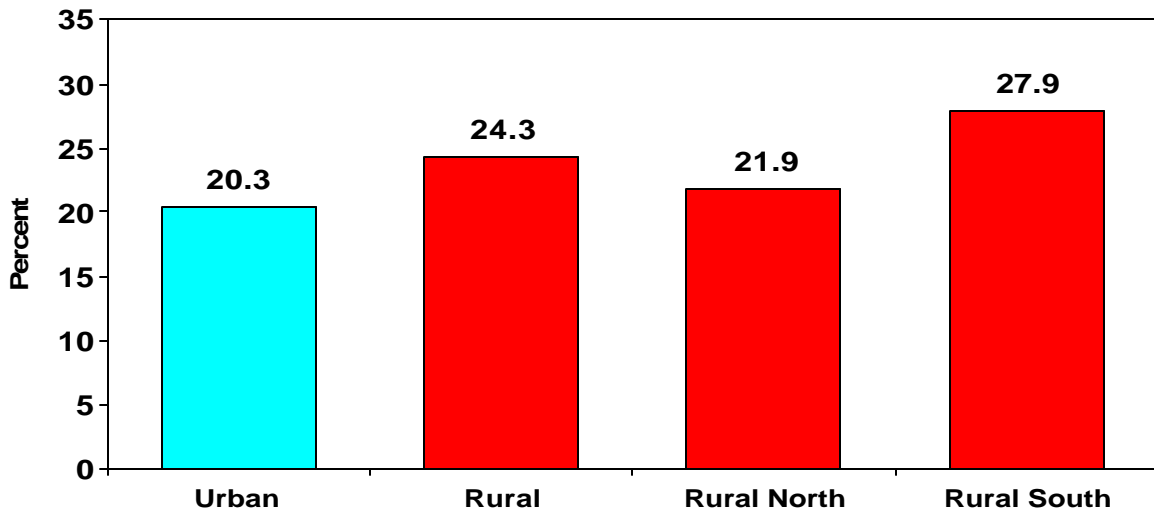
SOURCE: Center for Health Statistics, Alabama Department of Public Health. Birth data is preliminary. Births with unknown adequacy are not considered in percentage calculation.

**Percent of Births With Less Than Adequate Prenatal Care
U.S., Alabama, Rural Alabama, and Urban Alabama, 2004**



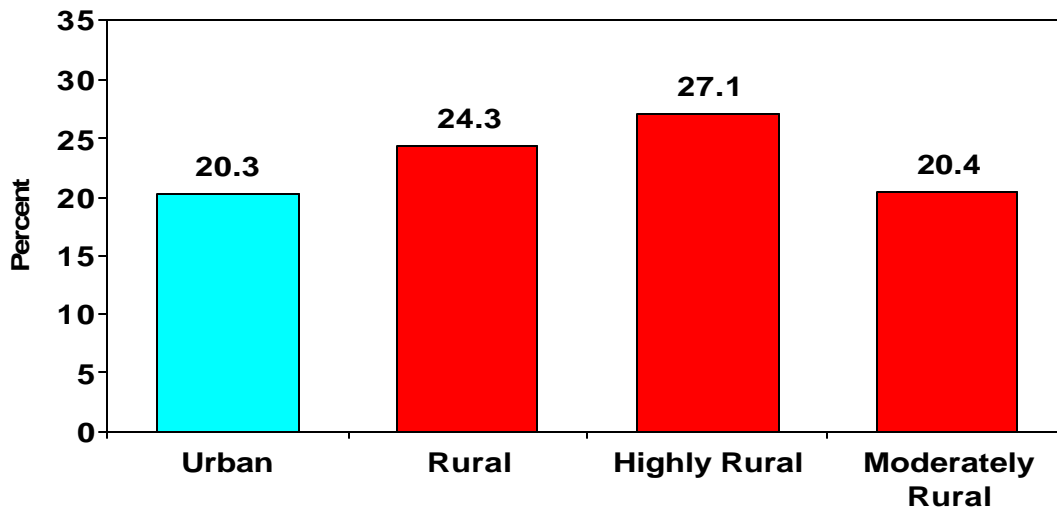
SOURCE: Center for Health Statistics, Alabama Department of Public Health. Alabama data is preliminary. U.S. data is for 2002. Adequacy of care is determined using the Adequacy of Prenatal Care Utilization Index.

**Percent of Births With Less Than Adequate Prenatal Care
Urban, Rural, Rural North, and Rural South Alabama, 2004**



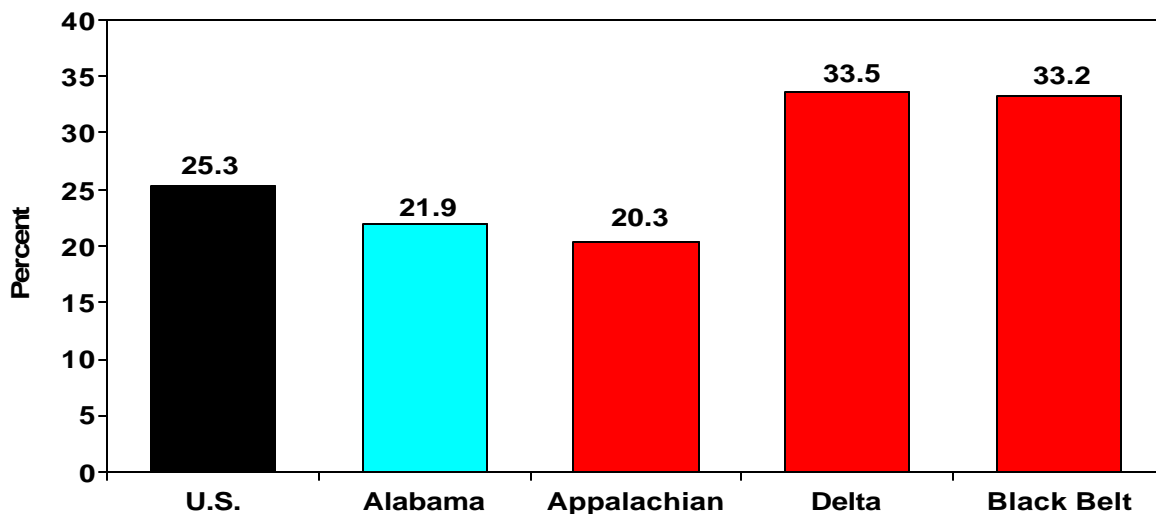
SOURCE: Center for Health Statistics, Alabama Department of Public Health. Alabama data is preliminary. Adequacy of care is determined using the Adequacy of Prenatal Care Utilization Index.

Percent of Births With Less Than Adequate Prenatal Care Urban, Rural, Highly Rural, and Moderately Rural Alabama, 2004



SOURCE: Center for Health Statistics, Alabama Department of Public Health. Alabama data is preliminary. Adequacy of care is determined using the Adequacy of Prenatal Care Utilization Index.

Percent of Births With Less Than Adequate Prenatal Care U.S., Alabama, and Special Regions in Alabama, 2004



SOURCE: Center for Health Statistics, Alabama Department of Public Health. Alabama data is preliminary. U.S. data is for 2002. Adequacy of care is determined using the Adequacy of Prenatal Care Utilization Index.

Resident Births and Percent with Less Than Adequate Prenatal Care by County, 2004

County of Residence	All Births	With Less Than Adequate Care	Adequacy Not Given	Percent
Alabama	59,166	12,897	394	21.9
Autauga	657	153	3	23.4
Baldwin	1,811	321	14	17.9
Barbour	343	166	2	48.7
Bibb	251	72	1	28.8
Blount	659	125	3	19.1
Bullock	159	65	2	41.4
Butler	261	67	3	26.0
Calhoun	1,543	247	3	16.0
Chambers	432	107	1	24.8
Cherokee	262	69	1	26.4
Chilton	543	114	2	21.1
Choctaw	155	32	1	20.8
Clarke	339	95	1	28.1
Clay	140	26	2	18.8
Cleburne	163	27	1	16.7
Coffee	589	125	1	21.3
Colbert	606	88	2	14.6
Conecuh	132	40	0	30.3
Coosa	111	20	0	18.0
Covington	434	95	3	22.0
Crenshaw	172	52	2	30.6
Cullman	956	118	5	12.4
Dale	743	186	2	25.1
Dallas	663	217	5	33.0
DeKalb	1,013	403	31	41.0
Elmore	957	231	2	24.2
Escambia	411	125	1	30.5
Etowah	1,196	206	0	17.2
Fayette	179	37	2	20.9
Franklin	399	99	4	25.1
Geneva	300	81	0	27.0
Greene	135	82	3	62.1
Hale	216	97	1	45.1
Henry	194	58	1	30.1
Houston	1,241	355	0	28.6
Jackson	600	117	60	21.7
Jefferson	9,161	1,788	51	19.6
Lamar	161	26	1	16.3
Lauderdale	923	113	11	12.4
Lawrence	390	103	1	26.5
Lee	1,422	254	8	18.0
Limestone	830	175	8	21.3
Lowndes	161	39	0	24.2
Macon	226	56	3	25.1
Madison	3,699	485	21	13.2
Marengo	280	82	4	29.7
Marion	338	33	1	9.8
Marshall	1,404	411	7	29.4
Mobile	5,700	1,122	23	19.8
Monroe	286	65	1	22.8
Montgomery	3,279	853	14	26.1
Morgan	1,497	481	8	32.3
Perry	173	60	0	34.7
Pickens	262	76	3	29.3
Pike	387	127	4	33.2
Randolph	264	71	2	27.1
Russell	609	250	13	41.9
Shelby	2,560	421	4	16.5
St. Clair	855	129	2	15.1
Sumter	169	49	1	29.2
Talladega	960	174	4	18.2
Tallapoosa	471	95	0	20.2
Tuscaloosa	2,163	604	31	28.3
Walker	879	75	2	8.6
Washington	194	56	0	28.9
Wilcox	204	68	0	33.3
Winston	294	38	1	13.0

SOURCE: Center for Health Statistics, Alabama Department of Public Health. 2004 data is preliminary. Births with unknown adequacy are not considered in percentage calculation.

Definitions and Other Technical Information

Counties in the Various Regions Used in This Report:

Alabama's **Rural Counties** include Autauga, Baldwin, Barbour, Bibb, Blount, Bullock, Butler, Chambers, Cherokee, Chilton, Choctaw, Clarke, Clay, Cleburne, Coffee, Colbert, Conecuh, Coosa, Covington, Crenshaw, Cullman, Dale, Dallas, DeKalb, Elmore, Escambia, Fayette, Franklin, Geneva, Greene, Hale, Henry, Jackson, Lamar, Lawrence, Limestone, Lowndes, Macon, Marengo, Marion, Marshall, Monroe, Perry, Pickens, Pike, Randolph, Russell, St. Clair, Sumter, Talladega, Tallapoosa, Walker, Washington, Wilcox, and Winston.

Alabama's **Highly Rural Counties** include Barbour, Bibb, Blount, Bullock, Butler, Cherokee, Choctaw, Clarke, Clay, Cleburne, Coffee, Conecuh, Coosa, Covington, Crenshaw, Cullman, Dallas, DeKalb, Escambia, Fayette, Franklin, Geneva, Greene, Hale, Henry, Jackson, Lamar, Lawrence, Lowndes, Macon, Marengo, Marion, Marshall, Monroe, Perry, Pickens, Pike, Randolph, Sumter, Washington, Wilcox, and Winston.

Alabama's **Moderately Rural Counties** include Autauga, Baldwin, Chambers, Chilton, Colbert, Dale, Elmore, Limestone, Russell, St. Clair, Talladega, Tallapoosa and Walker.

Alabama's **Rural North Counties** include Bibb, Blount, Chambers, Cherokee, Chilton, Clay, Cleburne, Colbert, Coosa, Cullman, DeKalb, Elmore, Fayette, Franklin, Hale, Jackson, Lamar, Lawrence, Limestone, Macon, Marion, Marshall, Pickens, Randolph, St. Clair, Talladega, Tallapoosa, Walker, and Winston.

Alabama's **Rural South Counties** include Autauga, Baldwin, Barbour, Bullock, Butler, Choctaw, Clarke, Coffee, Conecuh, Covington, Crenshaw, Dale, Dallas, Escambia, Geneva, Greene, Henry, Lowndes, Marengo, Monroe, Perry, Pike, Russell, Sumter, Washington, and Wilcox.

Alabama's **Urban Counties** include Calhoun, Etowah, Houston, Jefferson, Lauderdale, Lee, Madison, Mobile, Montgomery, Morgan, Shelby, and Tuscaloosa.

Alabama's **Appalachian Region** includes Bibb, Blount, Calhoun, Chambers, Cherokee, Chilton, Clay, Cleburne, Colbert, Coosa, Cullman, DeKalb, Elmore, Etowah, Fayette, Franklin, Hale, Jackson, Jefferson, Lamar, Lauderdale, Lawrence, Limestone, Macon, Madison, Marion, Marshall, Morgan, Pickens, Randolph, St. Clair, Shelby, Talladega, Tallapoosa, Tuscaloosa, Walker, and Winston counties.

Alabama's **Delta Region** includes Barbour, Bullock, Butler, Choctaw, Clarke, Conecuh, Dallas, Escambia, Greene, Hale, Lowndes, Macon, Marengo, Monroe, Perry, Pickens, Russell, Sumter, Washington, and Wilcox counties.

Alabama's **Black Belt Region** includes Bullock, Choctaw, Dallas, Greene, Hale, Lowndes, Macon, Marengo, Perry, Pickens, Sumter, and Wilcox counties.

Adequacy of Prenatal Care Utilization (APNCU) Index:

This is a measure that is based upon recommendations from the American College of Obstetricians and Gynecologists which incorporates the month that care began, the number of prenatal visits, and adjusts for the infant's gestational age. The APNCU categorizes care as: intensive, adequate, intermediate, and inadequate. Less than adequate, as indicated in this report, includes intermediate and inadequate. Births with missing data for which this index could not be calculated were excluded from percentage calculation. Additional information on this index, including the methodology, can be referenced in the following article:

Kogan MD, Martin JA, Alexander GR, Kotelchuk M, et al. The changing pattern of prenatal care utilization in the United States, 1981-1995, using different prenatal care indices. JAMA 279(20):1623-8. 1998.

Permission is granted to reproduce all or any portion of this publication.